

DS-9500 - Wi-Fi network configuring

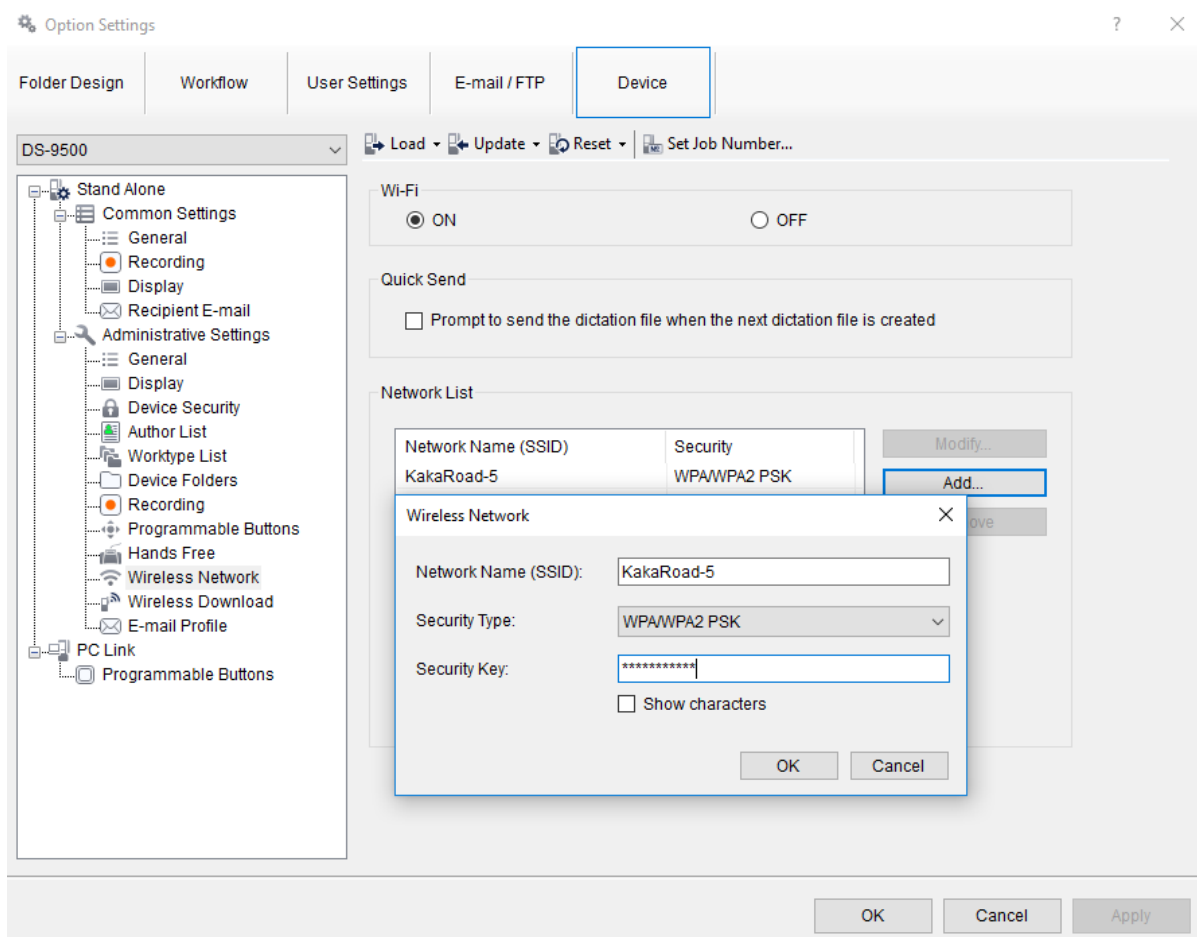
Configuring the recorder to connect to your wireless network using the Dictation Module.

- Open the Dictation Module
- Connect the DS-9500 recorder
- Click on Tools – Options – Device. **Note:** The Device settings will not appear if the recorder is not connected.
- In the left column click on Wireless Network
- Select ON to enable WiFi
- Click ADD and enter the following
 - Network name (SSID)
 - Security Type
 - Security Key

Click OK

Repeat the same steps above should you want to add another wireless network – you can register up to 10 wireless networks.

Optional: Should you want the recorder to send the file when you press the New button, then tick the box “Prompt to send the dictation when the next dictation file is created”.



The recorder is now configured to use your wireless network. The next step is to configure the recorder to [download](#) and/or [email](#) dictations.